

KOLSTER-BRANDES LIMITED

FOOTSCRAY

SIDCUP

KENT

MODEL
KR20/1

ISSUED APRIL, 1954

SERVICE DATA SUPPLEMENT

K-B Museum.org.uk

The K-B Model KR20/1 Receiver is an improved version of the Model KR20 for operation on AC power supply 200-250 volts.

The KR20 Service Data issued December 1953, provides the general Alignment and Voltage information.

The KR20/1 differ from the KR20 in the following respects.

8" speaker instead of 6".

6X4 rectifier superceded by metal rectifier.

A.V.C. and aerial circuits altered slightly to improve overall gain.

The following Spares List refers to components peculiar to this model and the correct part number should be quoted when ordering spares.

SPARES LIST

Cabinet	427/220	175/-
Mains Transformer		Brown, Red, Green			297/86	15/-
Output	„	Orange, Orange, White			427/95	5/6
Rectifier (Westinghouse) 15B35	407/192	13/-
Speaker 8"	295/251	28/- + P.T.

CIRCUIT DIAGRAM KR20/I

KB Museum.org.uk

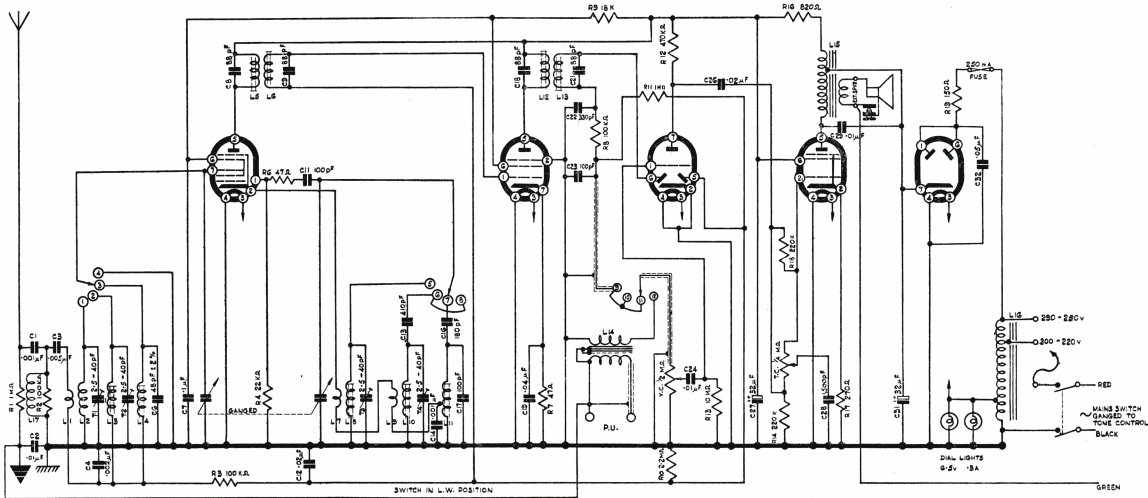
V1
6BE6

V2
6BA6

V3
6AT6

V4
6AQ5

V5
6X4



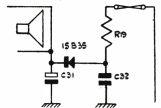
- L1, L2 5W 150 5-8 mhd-04 mh.
- L3, M.W. ARM 525 KΩ - 1510 KΩ
- L4, L.W. ARM. 142 KΩ - 140 KΩ

L.F. 422 KC/S

L.F. 5W OSC

L.F. 10W OSC

L.F. 1W OSC



CIRCUIT MODIFIED AS ABOVE WHEN METAL RECTIFIER IS USED IN PLACE OF V5.

GREEN