

K-B**Model GR10/I**

General Description : Five-valve (including rectifier), three-waveband superheterodyne table receiver. Released August 1951.

Power Supplies : A.C. mains, 200–250 volts, 50–100 c/s. (two adjustment positions).

Power Consumption : 50 watts.

Wavebands : L.W. 740–2100 m. (410–142 kc/s.); M.W. 187–585 m. (1610–570 kc/s.); S.W. 16.3–51 m. (18.4–5.9 Mc/s.).

Output : 3 watts to a high-flux 10-in. permanent-magnet elliptical loud-speaker of 3 ohms impedance.

Intermediate Frequency : 422 kc/s.

Valves : Brimar (V1) 6BE6; (V2) 6BA6; (V3) 6AT6; (V4) 6BW6; (V5) 6X4.

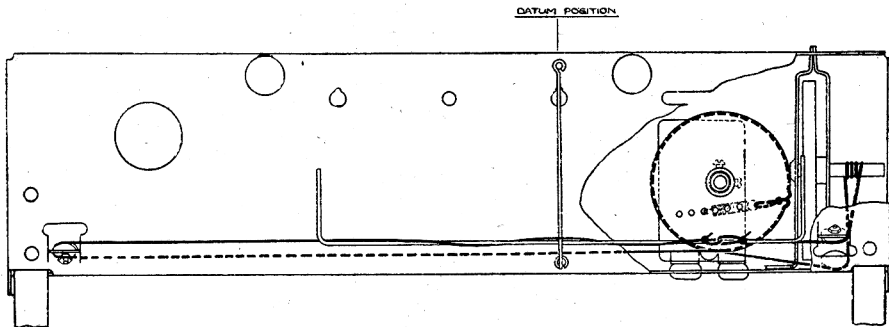
Dial Lamps : 6.5 volts, 0.3 amp. M.E.S. type.

Alignment Procedure : The alignment procedure is similar to that given for Models DR10, ER10 and FR10 (page 298).

Valve Analysis : The following readings were taken with the bandswitch in the M.W. position, volume control at minimum gain, aerial and earth disconnected. Mains voltage, 225 volts. Receiver adjusted to 240-volt tap. Total mains current 210 mA., H.T. current 70 mA.

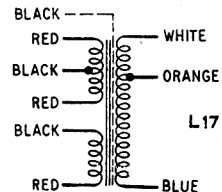
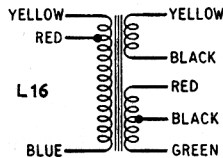
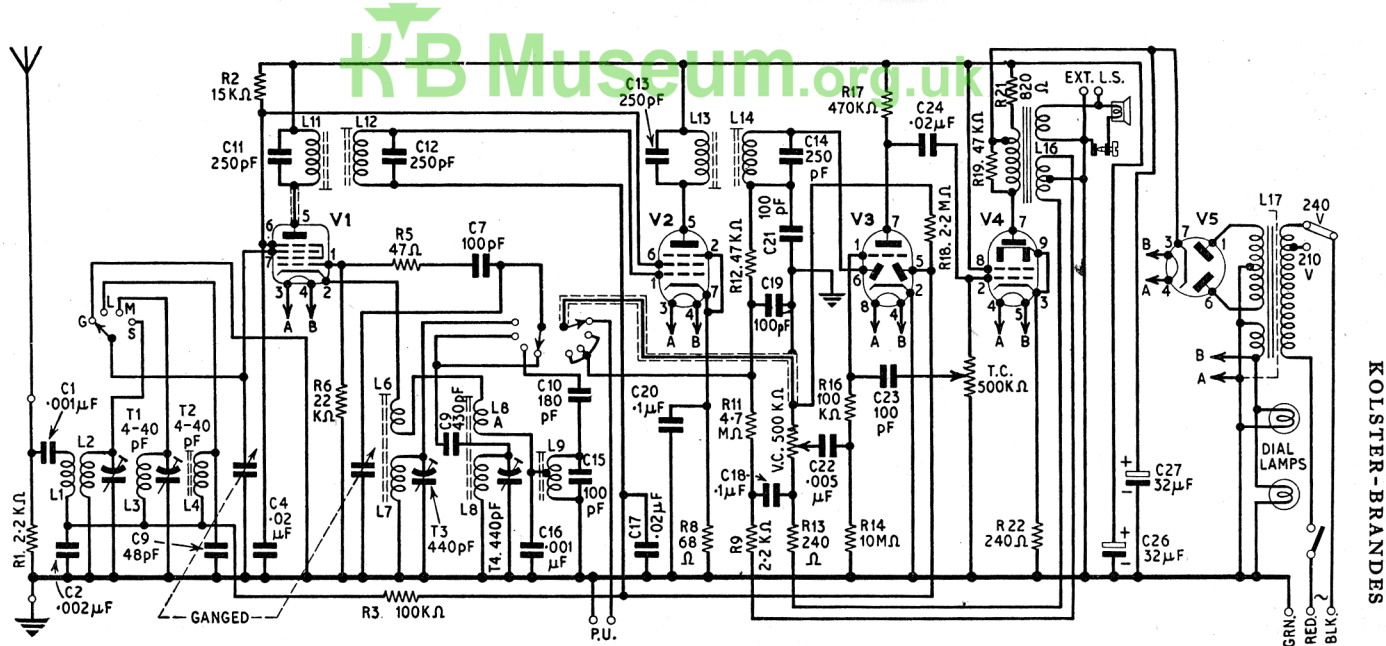
Valve	Volts Measured between Socket and Chassis							
	Pin 1	2	3	4	5	6	7	8
V1	SN	—	6.3 A.C.	—	245	97	—	—
V2	—	0.85	6.3 A.C.	—	245	97	0.85	—
V3	—	—	6.3 A.C.	—	SN	SN	62	—
V4	—	—	11.5	6.3 A.C.	—	270	260	245
V5	260 A.C.	—	6.3 A.C.	—	—	260 A.C.	270	—

SN, slightly negative.



DRIVE-CORD ASSEMBLY

Note that pointer is shown in datum with gang closed.



CIRCUIT DIAGRAM—K-B MODEL GR10/1