

Technical Specifications

Power Supply 240 V AC/9 V =
(6 x 1,5 V; IEC R 14)

Circuits FM 8; AM 5

Transistors 9

Diodes 7

IF AM 470 kHz; FM 10,7 MHz

Weight ca. 1,2 kg

Wave Ranges

MW	525 - 1620 kHz	572 - 185 m
FM	87,5 - 104 MHz	3,42 - 2,88 m
SW	5,8 - 6,35 MHz	51,7 - 47,4 m
LW	145 - 260 kHz	1154 - 2070 m

Power Output

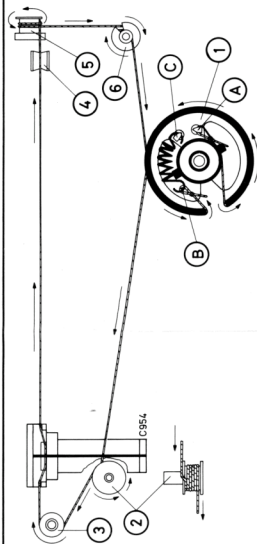
ca. 600 mW

Loudspeaker

80 x 120 mm perm.dyn. 8 Ohms

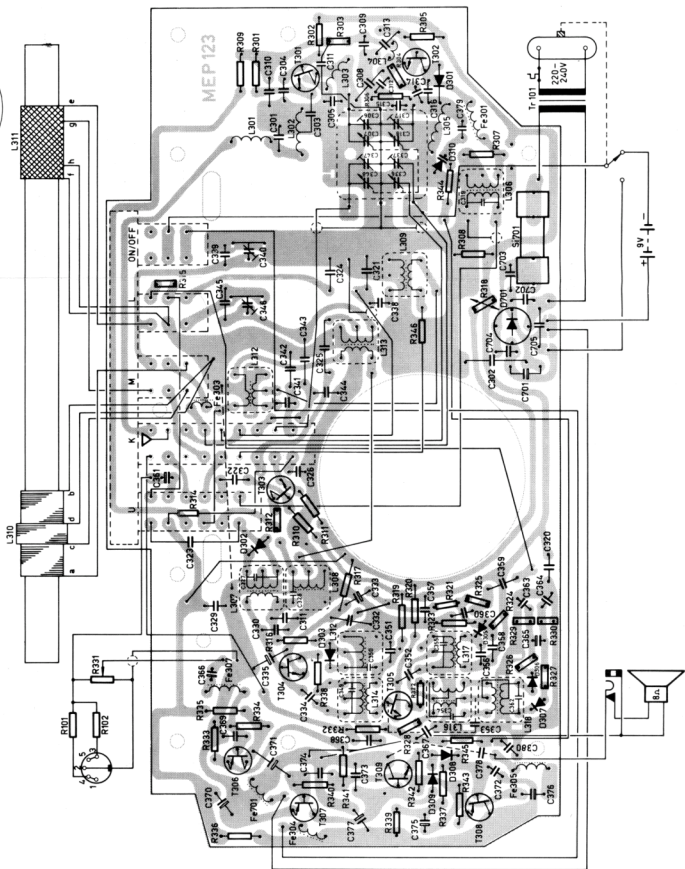
Dimensions W x H x D

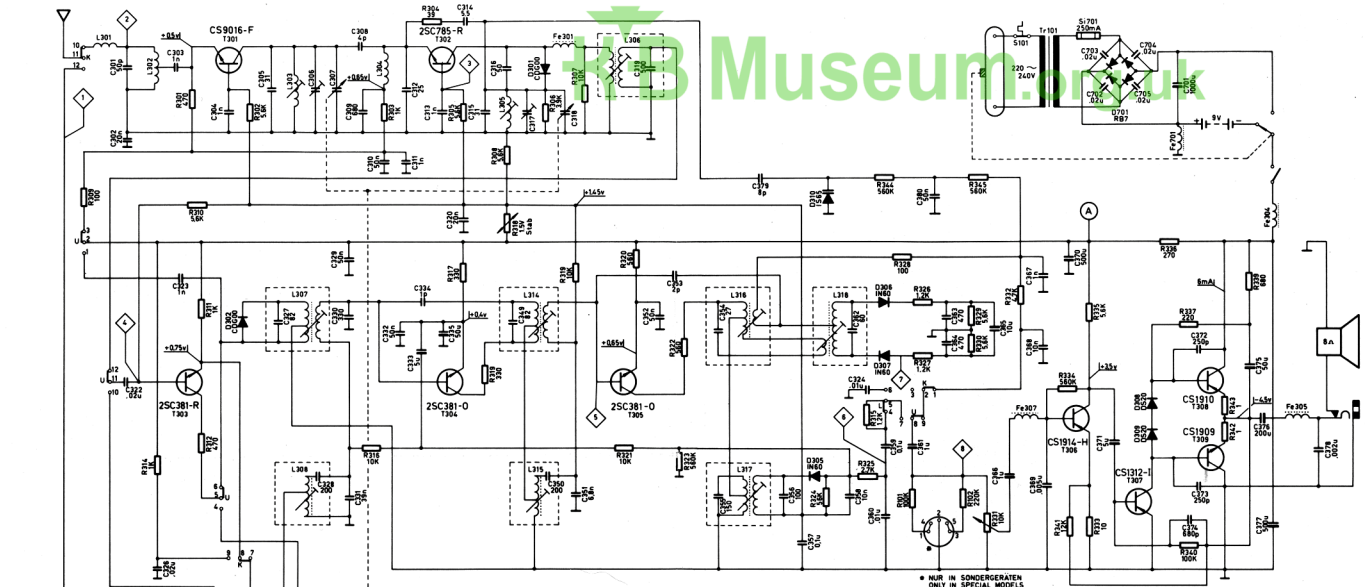
232 mm 165 mm 63 mm



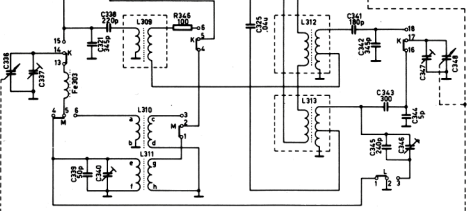
Dial drive

Hook the dial cord on the drive drum (1) (turned fully anticlockwise) at "A" and after an approx. three-quarter turn anticlockwise around (1) pass the cord through the notch of the pulley (2). After 5 turns anticlockwise around (2) lead the cord around the pulleys (3) and (4) up to the driving roller (5) and lay the cord with 2 turns around (5). Then after 1 turn anticlockwise around the thick shaft of the pulley (6) pass the cord through the notch to its thin shaft and after about 7 turns back to the drive drum (1). After an approx. 1/4 turn anticlockwise around (1) hook the dial cord with the "B" spring at "C". Attach the dial pointer as shown in the figure.





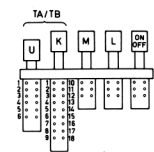
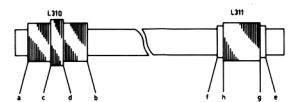
* NUR IN SONDERGERÄTEN
ONLY IN SPECIAL MODELS



- CS1914-H
 - CS1912-I
 - CS1910
 - CS1909
- Z5C794-R
 - Z5C793-R
 - Z5C381-O
 - Z5C381-R

GEZEICHNET SCHALTERSTELLUNG
U GEDRUCKT
SWITCH CONTACTS SHOWN IN FM
POSITION

ALLE WIDERSTÄNDE 1/8 WATT
ALL RESISTORS 1/8 WATT



WELLENBEREICHE WAVE RANGES	
U	87.5 - 104 MHz
K	5.8 - 6.3 MHz
M	510 - 1620 MHz
L	145 - 260 MHz

ALLE © SPANNUNGEN GEGEN ⊕ GEMESSEN
ALLE © SPANNUNGEN GEGEN ⊕ GEMESSEN
(SCHALTERSTELLUNG U & M)
ALL © VOLTAGES MEASURED TO ⊕
ALL © VOLTAGES MEASURED TO ⊕
SWITCH IN FM POSITION