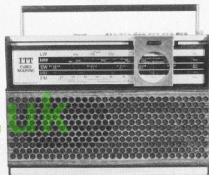


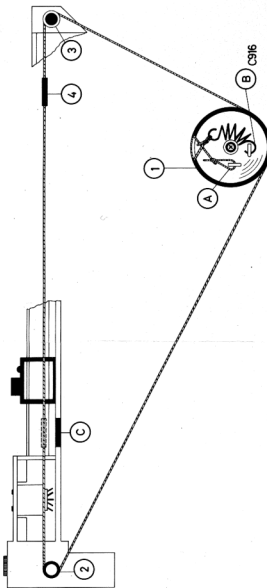
EURO MARINE

Typ 5213 02 33 Grill silver

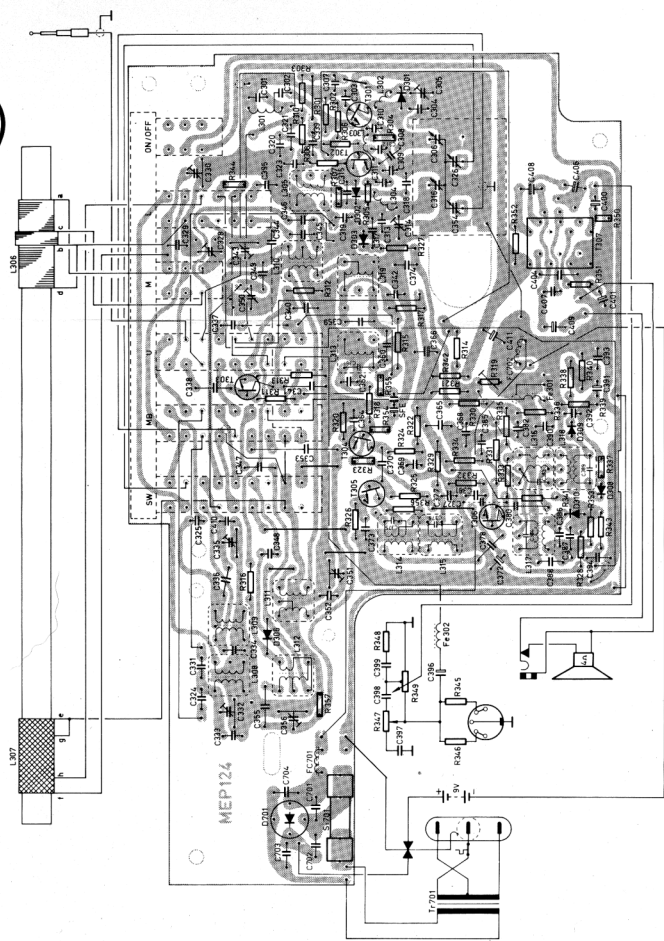
Typ 5213 02 35 Grill teak

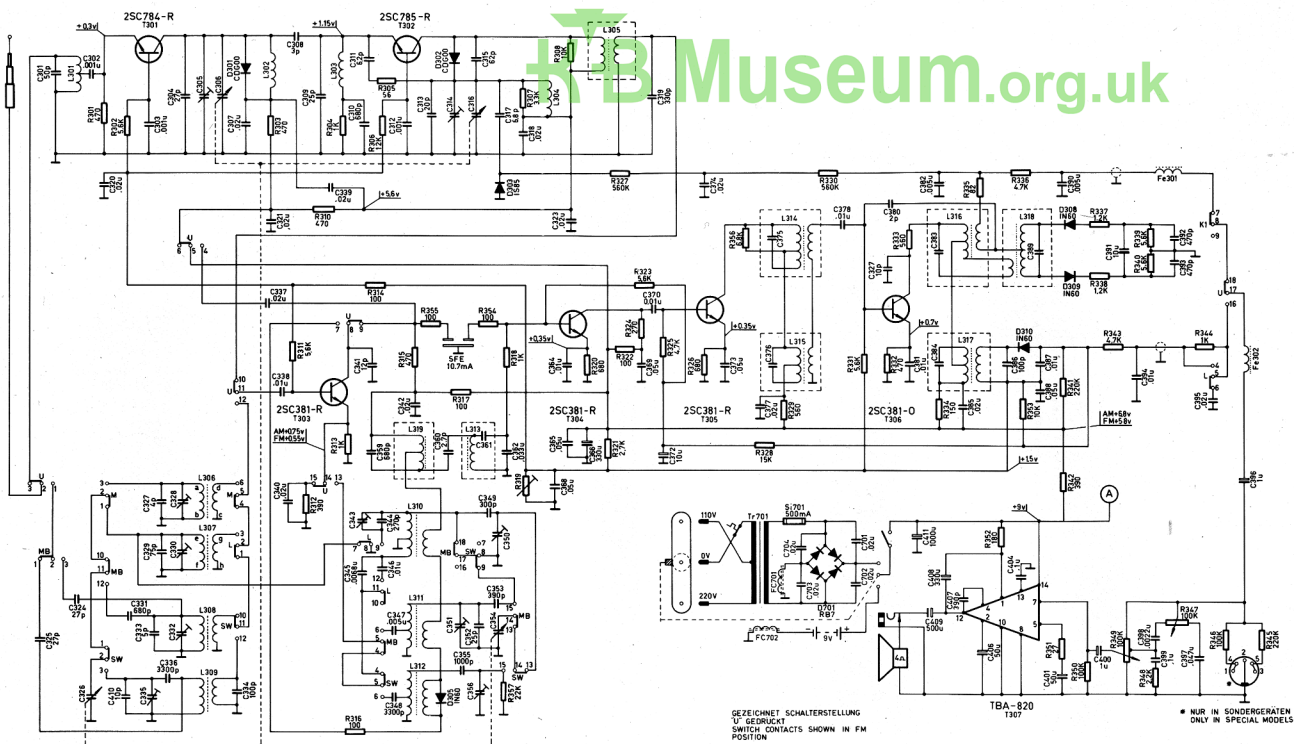

Technical Specifications

Power Supply	240 V AC/9 V = (6 x 1.5 V; IEC R 14)	Wave Ranges	MW	525 — 1605 kHz	588 — 185 m
Circuits	FM 7; AM 6		FM	87.5 — 104 MHz	3,42 — 2,88 m
Transistors	6; 1 IC		SW 1	1,4 — 4,0 MHz	214 — 75 m
Diodes	8		SW 2	5,8 — 16 MHz	51,7 — 18,8 m
IF	AM 470 kHz; FM 10.7 MHz	Power Output	LW	145 — 260 kHz	1164 — 2070 m
Weight	1,2 kg approx.	Power Output			
		Loudspeaker			
		Dimensions			
				1.5 W approx.	
				80 x 120 mm perm. dyn. 4 ohms	
				W = 250 mm; H = 178 mm; D = 66 mm	



Drive cord assembly
 With tuning capacitor turned fully clockwise, hook dial cord with a loop on the drive drum 1 at A. After 11/2 turns around 1, pass the cord around 2 and back to the drive drum 1 and hook it on with the spring at B. Next, rotate tuning capacitor with drive drum 1 fully anticlockwise and fasten the engaging sleeve on the dial cord above the mark C.

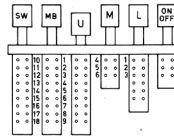
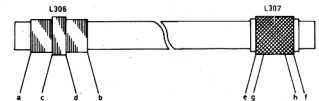
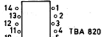




GEZEICHNET SCHALTERSTELLUNG
 'U' GEDRUCKT
 SWITCH CONTACTS SHOWN IN FM
 POSITION

ALLE WIDERSTÄNDE 1/8 WATT
 ALL RESISTORS 1/8 WATT

* NUR IN SONDERGERÄTEN
 ONLY IN SPECIAL MODELS



WELLENBEREICHE
 WAVE RANGES

SW	5.8 - 16 MHz
MB	1.8 - 4.0 MHz
U	875 - 104 MHz
M	510 - 1620 kHz
L	15 - 265 kHz

ALLE ⊕ SPANNUNGEN GEGEN ⊖ GEMESSEN
 (SCHALTERSTELLUNG U, K W.)
 ALL ⊕ VOLTAGES MEASURED TO ⊖
 ALL ⊖ VOLTAGES MEASURED TO ⊕
 SWITCH IN FM POSITION