

I.T.T./K.B.

## Model 'Tiny' Super

**General Description:** A portable three-waveband A.M./F.M. battery operated radio with sockets provided for the connection of an earphone and external power supplies.

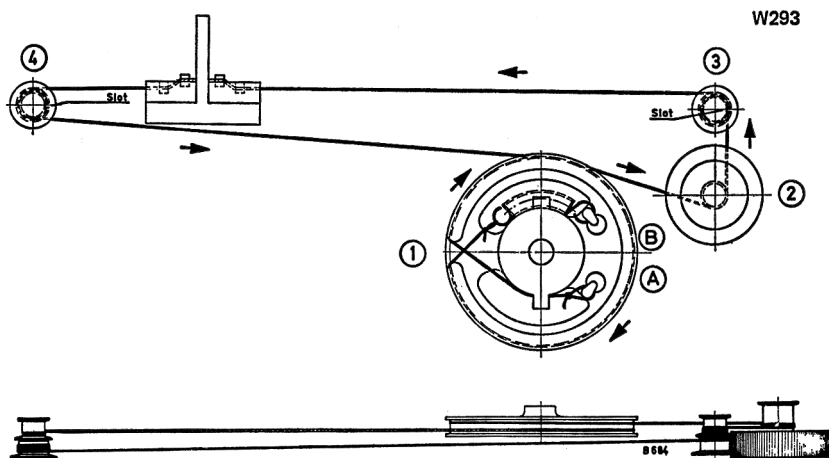
**Wavebands:** L.W. 145-260kHz; M.W. 525-1,605kHz; F.M. 87.5-104MHz.

**Batteries:** 9V ( $6 \times 1.5$  V).

**Loudspeaker:** 12.5  $\Omega$  impedance.

**Drive Cord Replacement** (see Fig. W293): Rotate the tuning capacitor fully clockwise. Hook the dial cord with the loop on the tuning capacitor wheel 1 at "A". Lead the dial cord over the notch and after a quarter turn clockwise up to the drive drum 2. After two and a quarter turns anticlockwise lead the cord up to the pulley 3. Lay the cord with four turns anticlockwise around the small section of the pulley (note position of the slot). Next, lead the cord over the slot and lay it with one and a quarter turns around the large section. Lead the cord up to the pulley 2 and, after four and three-quarter turns anticlockwise (note position of slot!), around the larger section lead the cord over the notches and after a three-quarter turn around the smaller section lead it up to the tuning capacitor wheel 1. After a three-quarter turn, pass the cord through the notch and hook it on with the spring at "B".

**Circuit Diagram Note:** All positive voltages are measured with respect to point A; negative voltages are measured with respect to chassis.



(W293) DRIVE CORD—MODEL "TINY" SUPER

