

**I.T.T./K.B.****Model 'Golf'**

**General Description:** A portable mains or battery operated radio for the reception of A.M. and F.M. transmissions. A telescopic aerial is provided for the V.H.F. waveband and sockets are fitted for the connection of a car aerial, tape recorder and earphone. Circuit features include a series-stabilised H.T. supply and A.F.C. on the V.H.F. waveband.

**Mains Supply:** 200–240 volts, A.C.

**Batteries:** 9 volts ( $6 \times 1.5$  volts or  $2 \times 4.5$  volts).

**Current Consumption:** 75 mA at 50 mW.

**Wave Bands:** L.W. 145–282 kHz; M.W. 510–1605 kHz; S.W. 5.8–7.8 MHz; V.H.F. 87.5–104 MHz.

**Loudspeaker:** 4.5 ohms impedance.

**Dismantling:** Pull off the control knobs for volume, tone and station tuning. After removal of the two screws, it is possible to remove the dial. The cabinet is fastened to the chassis by means of two screws which are located underneath the dial. After removing the screws, the cabinet can be lifted off the chassis.

**Stringing the Drive Cord: (See Fig. W296)**—Fully open the tuning capacitor (up to its right-hand stop).

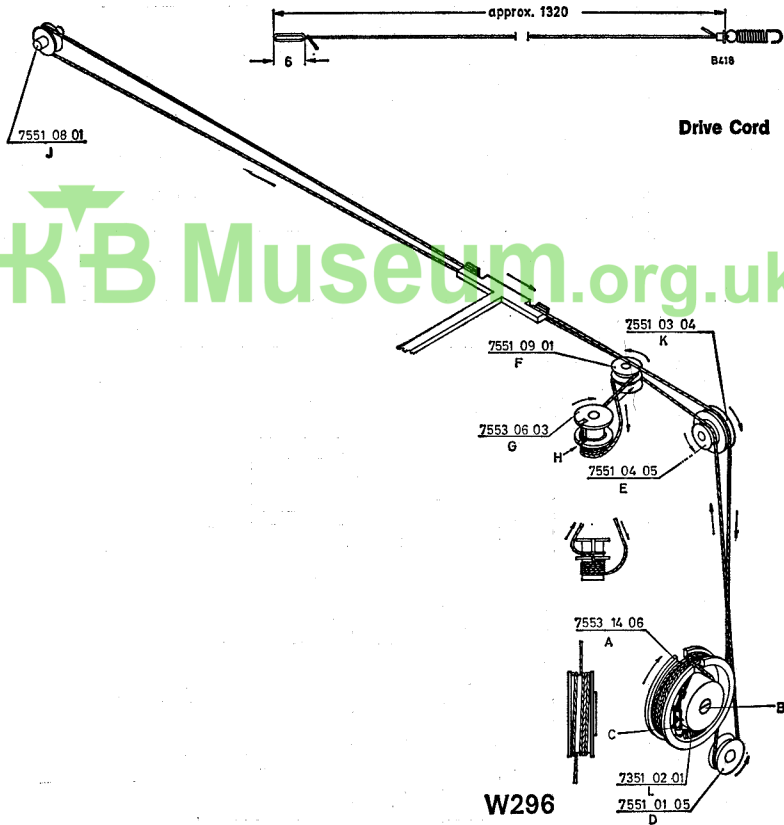
Rotate the drive shaft **B** of the FM tuner clockwise until it stops.

Fix the drive drum **A** on the shaft (fixing screw at the rear), so that the cut-out is at the top and in a vertical position.

Slip the loop of the dial cord over the metal plate **C**. Lead the dial cord through the cut-out and lay it with  $1\frac{1}{4}$  turns around the rear section of the drive drum and then lead the cord over the pulleys **D** and **E** and around the lower section of **F** up to **H**. Lay the cord with  $6\frac{1}{4}$  clockwise turns from bottom to top around the lower section of **H**. Lead the cord through the slit (slit is at front when tuning capacitor is fully open) and after  $1\frac{1}{2}$  clockwise turns more around the upper section of **H** lead the cord over **F**, **J** and **K** and lay it with  $2\frac{3}{4}$  clockwise turns around the drive drum **A** from inside to outside. Next, lead the cord through the cut-out towards the inside.

Hook the spring in the eyelet **C** and lay it to the right side in the groove of the drive drum. Using a pair of tweezers, retighten the length of the cord that travels down to the drive drum. Now close the tuning capacitor, loosen the screw of the drive drum **A** (if necessary, remove the rod antenna), turn the drive shaft **B** to the left until it stops and retighten the screw of the drive drum **A**.

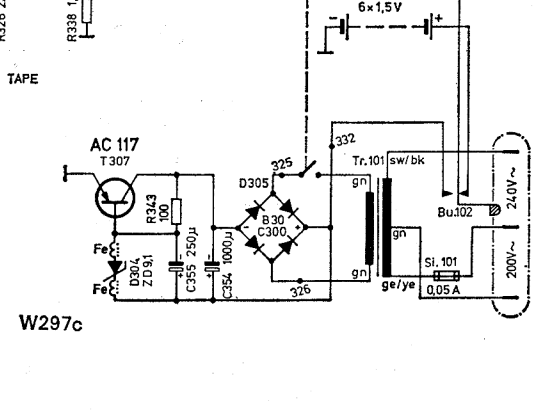
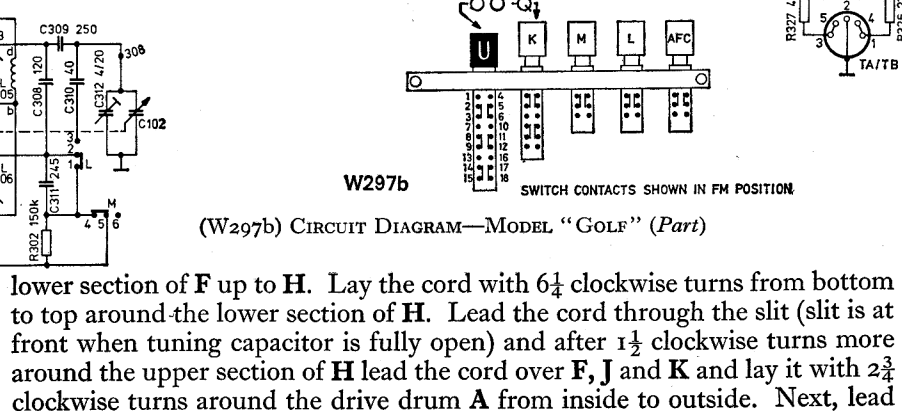
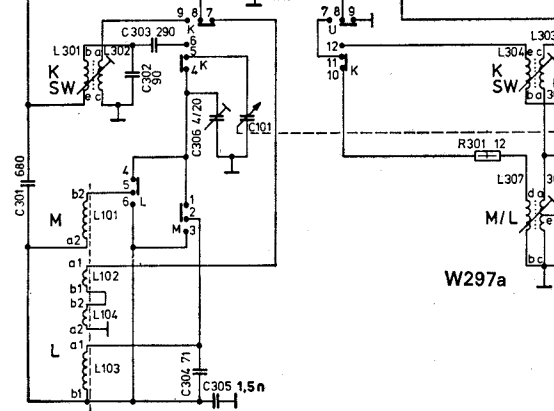
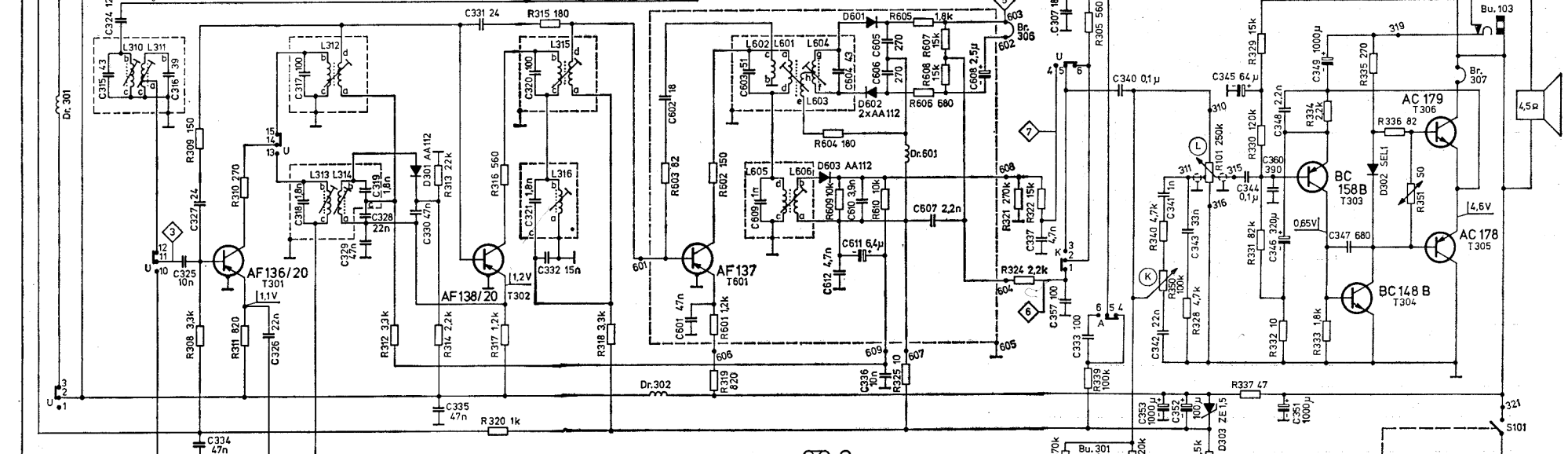
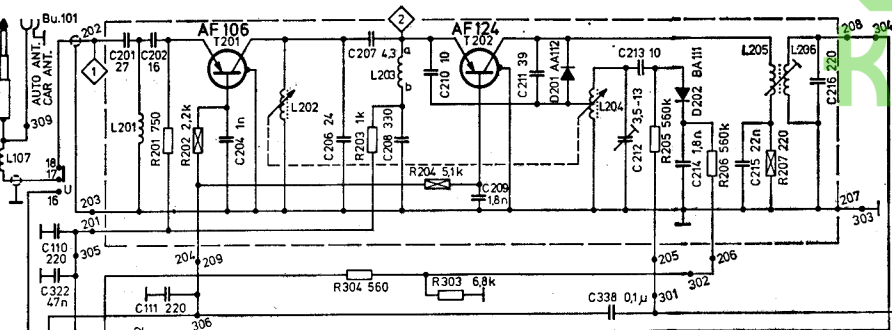
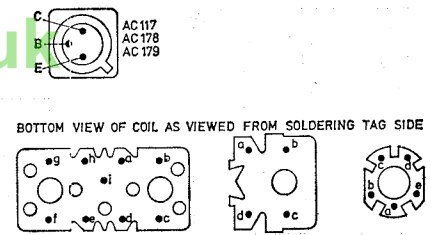
I.T.T./K.B.



(W296) DRIVE CORD—MODEL "GOLF"



LOCATION OF COMPONENTS	POSIT. NR./NO.
CHASSIS	100 - 199
UKW-PLATTE/FM-BOARD	200 - 299
RF-ZF-IF-PLATTE RF-IF-AF-BOARD	300 - 399
AM-FM-DEMODULATOR PLATTE/BOARD	600 - 699



(W297a) CIRCUIT DIAGRAM—MODEL "GOLF" (the cord through the cut-out towards the inside.

(W297b) CIRCUIT DIAGRAM—MODEL "GOLF" (Part)

(W297c) CIRCUIT DIAGRAM—MODEL "GOLF" (Continued)